



# NATURAL —Veterinary Diet—

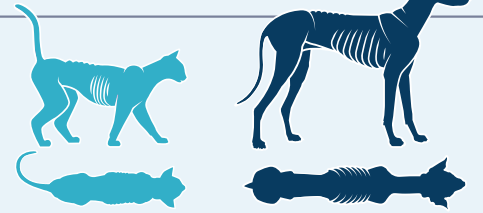
Enhanced with Vitamins, Minerals and Other Nutrients

## Body Condition Scoring Chart

UNDERWEIGHT

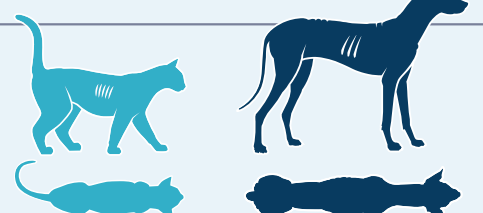
**1**

Visible ribs, lumbar vertebrae, and pelvic bones; no palpable fat.



**3**

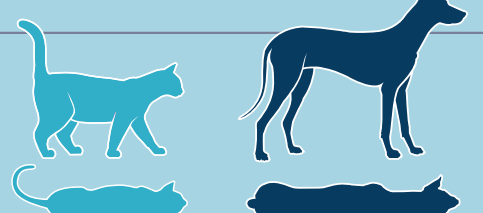
Ribs easily palpated and may be visible with no obvious fat. Tops of lumbar vertebrae visible; pelvic bones more prominent.



IDEAL WEIGHT

**5**

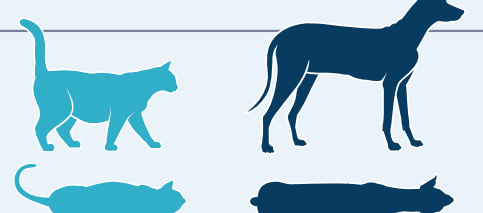
Waist visible behind ribs; minimal abdominal fat.



OVERWEIGHT

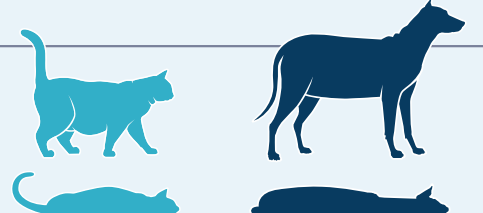
**7**

Heavy fat cover; difficulty palpating ribs. Waist barely visible or absent.



**9**

Massive fat deposits over entire body. Distended abdomen. Absent waist.



## Health Risks Associated with Overweight Pets<sup>1,2</sup>

Just like us, overweight pets can face important health risks.

- Heart disease
- Arthritis
- Hip and knee problems
- Respiratory disease
- Pancreatitis
- Cancer
- Liver disease (cats)
- Periodontal disease
- Allergies and other skin conditions
- Diabetes
- Urinary tract infections
- Shortened lifespan



<sup>1</sup> Lund et al. *Intern J Appl Res Vet Med* 2005; 3:88-96.

<sup>2</sup> Lund et al. *Intern J Appl Res Vet Med* 2006; 4:177-186.